

CreateBB.exe

Yoshiki OTOBE

October 10, 1999

Introduction

CreateBB.EXE is a graphic interface for BMC.EXE provided by T. Oshima. BMC.EXE creates “Bounding Box” file, which contains an information about a file such as BMP(Windows’ Bit Map format), WMF(Windows Meta File) and EMF(Enhanced Meta File). Since those file doesn’t contain the information about size in \LaTeX readable form, dviout tries to find it in a file called “.bb”. That is, if you want to use “foo.bmp” file in your document, graphics packages for dviout tries to read “foo.bb” file.

Preparation

Now you got CreateBB.EXE. This program uses BMC.EXE with standard way.

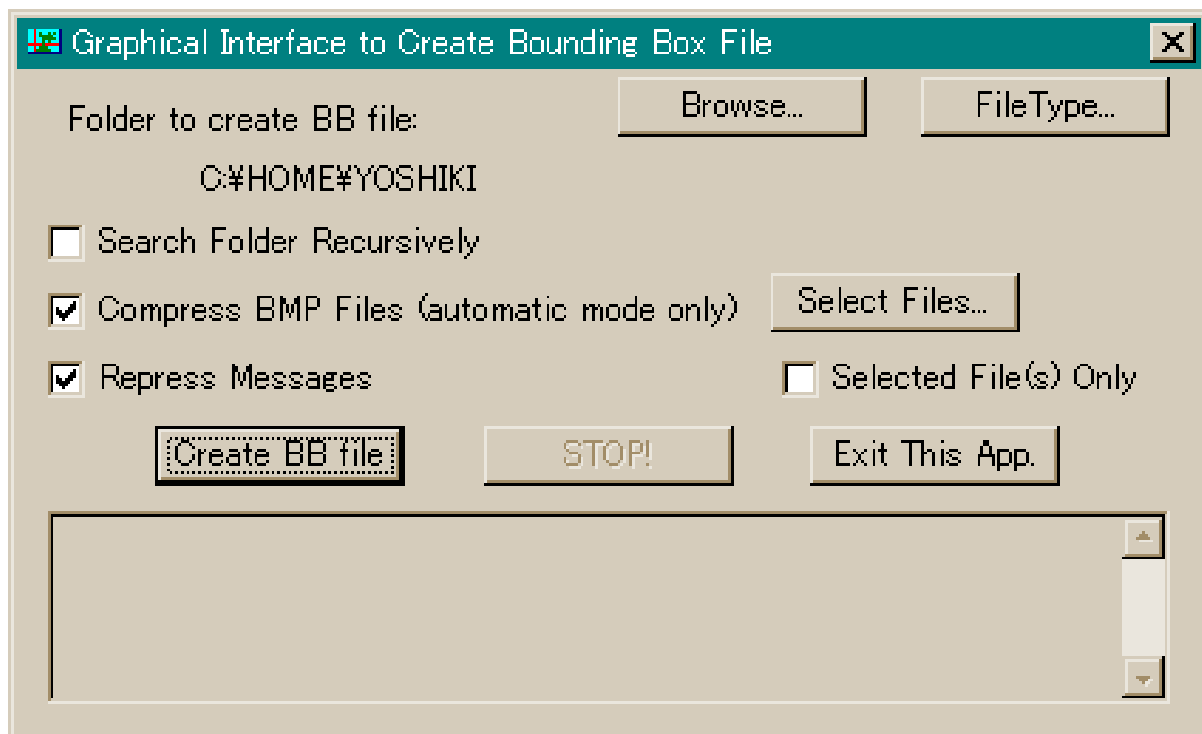
One of the most convenient way to use this program is to put this program into the same folder with BMC.EXE, usually which is the same with dviout's. Then Windows will find BMC.EXE automatically.

There's another way as follows: If you put CreateBB.exe into a different folder from BMC.EXE, you have to set Windows to be able to find it. One way is to set PATH include the folder in which BMC.EXE is. The other way is to register BMC.EXE to your system registry.

Anyway, if BMC.EXE starts when you input "start bmc.exe" in the command prompt, you can use CreateBB.EXE.

Run CreateBB program

If you run CreateBB.exe, you will see the following window.



Create Bounding Box files

First of all, select a folder you want to create .bb file from BMP etc files. To do it, press [Browse] button.

CreateBB, by default, creates .bb files from BMP, WMF and EMF files. Those files will be found automatically by the program in the specified folder. If you want to create from JPG and MAG format, press [FileType] button and select them.

After that, press [CreateBB] button.

Options

CreateBB shows a lot of messages in the window. But these messages make your computer slow. Check [Repress Messages] and the message will be repressed except essentially needed ones.

Create BB, by default, searches graphic files only in the specified folder. If you want to get it search them recursively, check [Search Folder Recursively].

The other option will be explained in the next.

Why BMC.EXE

CreateBB calles BMC.EXE by T. Oshima. It is always distributed with dviout.exe also by him. He originally consider to make the huge bit map generated by Ghostscript small. So he decided to compress BMP file. However, it is important the speed to extract the file must be fast.

A lot of EPS file used with \LaTeX contains a lot of white color. Please imagine a figure which describes a shape of a mathematical function. It may be almost all white and a few black curves. Keeping these in his mind, he defined a format called BMC.

BMC was originally a program to compress BMP files. CreateBB can also compress BMP (of course with BMC.EXE) if you check [Compress BMP files].

Of course there's no doubt that dviout can treat BMC format immediately.

Selecting File

If you press [Select Files] button, you will see common file-open dialog. In the dialog, you can choose some files (click them with [Ctrl] key). Press [open] button and CreateBB starts to create .bb files. By default, CreateBB will create for BMP etc. files also (like [Create BB] is pressed). However, if [Selected Files Only] is checked, CreateBB generates .bb files only from selected ones.

If the selected files are not BMP, WMF or EMF files, Susie Plug-In programs for the file are needed. CreateBB doesn't check whether there are or not. If corresponding spi is not found, CreateBB shows a message like "ERRORCODE=5".

Copyright

CreateBB is made by Y. Otobe to make it easy to create .bb files. This program shall be distributed with its source program using Microsoft Foundation Class library.

Anyone can use it for any purpose. I don't restrict how to treat them at all, it is totally free. Please use it as is put in a public domain.

Department of Mathematical Sciences,
The University of Tokyo.

3-8-1 Komaba, Meguro-ku, Tokyo 153-8914 JAPAN
otobe@ms.u-tokyo.ac.jp